



NEW quiet exhaust fan unit has been designed to be fitted into sealed wooden cupboard style equipment enclosures, and enclosed equipment racks where hot air is not being expelled. These type of situations invariably cause thermal failure, as the in-board fans are just recycling hot air.

Technical Specifications

Low Noise **22.5dBA** (0.3 Sone)

- 28CFM (47.6m³/h) @2000 RPM
- High Static Pressure
- 1 x 9 Bladed 80mm Fan
- 12V DC - 200mA
- 2 x DC In/Out Sockets
- Temperature Sensor Socket
- DC in/out sockets
- 500mA world wide universal PSU supplied
- Mounting Holes align with attached fitting template
- Dimensions: 100 x 101 x 25mm (3.94" x 3.98" x 1")
- Combined Weight 400grams
- Fluid Bearings = 2 Year Limited Warrantee



OUTSIDE GRILLE VIEW



INSIDE FAN VIEW

These exhaust fans are easily fitted into any wooden enclosures all that is required is a an awl, cross head screwdriver and a 79mm (3 $\frac{1}{8}$ ") Hole Cutter.

They can also be fitted into plastic cases and racks, using a different outside grille kit.



Once mounted just hook-up to the 12V DC PSU via the input socket.

A second unit can also be run from the 500mA power supply by using a **CRC-LINK** cable.



500mA -PSU

Thermal Control

A thermal sensor accessory, the **CRC-TEMP** can be Plugged into the TEMP socket. It is set to operate at 40° and will reset at 30°, + or - 2°.

Using the acrylic adhesive pad, it should be attached to an area where the sensor can pick up the ambient temperature of the equipment being cooled, and **NOT** directly to the main heat source.



CRC-TEMP

**REGULAR MONTHLY CLEANING OF THE FAN BLADES TO REDUCE ANY DEPOSIT BUILD UP IS ADVISED
USE A SMALL PAINT BRUSH DO NOT USE AN AIR BLOWER WITHOUT STOPPING THE BLADES**



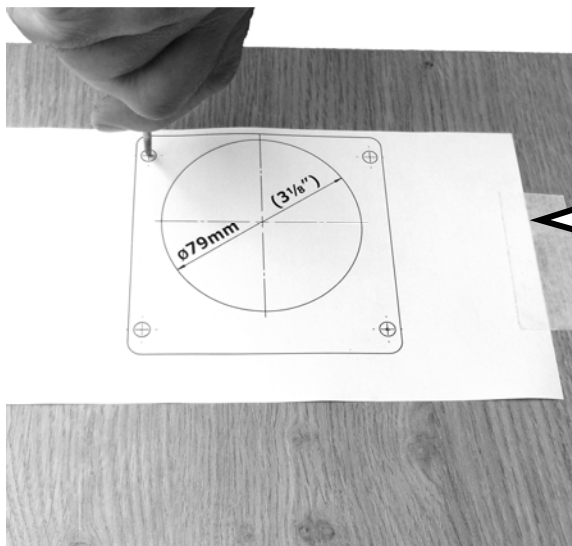
**9-10 Parsons Road, Parsons Industrial Estate, Washington Tyne & Wear, NE37 1HB, UK
0191 416 1717 or www.penn-elcom.com**

© 2016 -FT80-Q Cupboard Exhaust Unit is the exclusive design copyright of Penn-Elcom UK NE37 1HB - E&OE

FT80-Q FITTING GUIDE



You will require an awl, a cross head screwdriver & a 79mm (3 $\frac{1}{8}$ ") Hole Cutter.



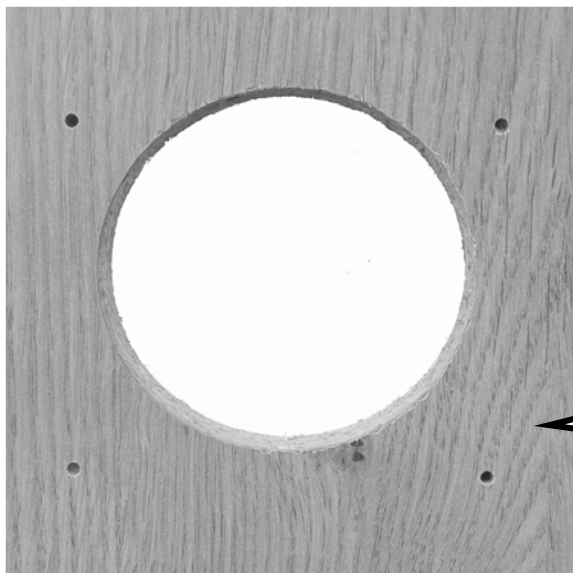
Position and tape down the template and mark out the hole centres with an Awl as shown.

Next drill the 4 internal mounting holes 3mm ($\frac{1}{8}$ ") pilot holes to a max depth of 10mm ($\frac{3}{8}$ ")

Drill the centre hole right through

Now using the 79mm (3 $\frac{1}{8}$ ") hole saw

Cut the hole out from both sides to avoid breakout damage



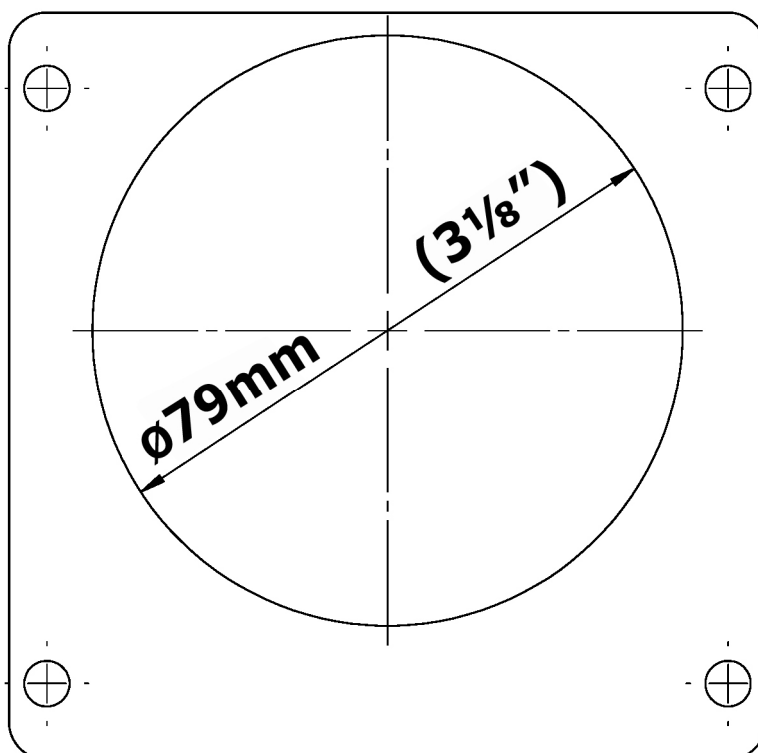
This picture shows the finished hole preparation



Now offer up the fan unit and fix using the 4 cross head screws provided.
DO NOT use longer screws



Finally align the grille with outside hole and press home firmly



penn-elcom®

9-10 Parsons Road, Parsons Industrial Estate, Washington Tyne & Wear, NE37 1HB, UK
 0191 416 1717 or www.penn-elcom.com

© 2016 -FT80-Q Cupboard Exhaust Unit is the exclusive design copyright of Penn-Elcom UK NE37 1HB - E&OE